

# Slyne and Hest Bank Community Emergency Plan

Plan last updated on: 30/01/2017

**If you are in immediate danger call 999**

---

## Plan distribution list

<b>Name</b>	<b>Role</b>	<b>Phone number/email address</b>	<b>Issued on</b>
Cllr. Roland Stretch Parish Council	Community Emergency Coordinator	01524 824413 stretch723@sky.com	25/01/17
Cllr. Joanne Leeman Parish Council	Community Emergency Contact	01524 561168 / 07907804648 joleeman98@gmail.com	25/01/17
Mr. Andrew Worgan St Luke's CofE	Community Emergency Contact	01524 822912 andrewworgan@btinternet.com	25/01/17
Mrs. Doreen Brookes PC Clerk and Memorial Hall Secretary	Community Emergency Contact	01524 825464 brookes.slynewithhestpc@btinternet.com	25/01/17
Mr. John Moss Christadelphian's	Community Emergency Contact	01524 745091 jsc101@talktalk.net	25/01/17
Val Gill United Reformed Church	Community Emergency Contact	01524 824089	25/01/17
Cllr. Eric Hamer Parish Council	Community Emergency Contact	01524 745426 hamer5376@gmail.com	25/01/17

# Plan amendment list

Date of amendment	Date for next revision	Details of changes made	Changed by

# Contents

Plan distribution list .....	2
Plan amendment list.....	3
Community profile and map .....	5
Local risk assessment.....	6
Local skills and resources assessment .....	8
Key locations identified with emergency services for use as places of safety .....	9
Emergency contact list.....	10
Telephone tree - emergency contacts .....	11
Organisations who may be able to identify vulnerable people in an emergency .....	12
Activation Triggers.....	12
First steps in an emergency.....	13
Community emergency group first meeting agenda .....	14
Actions agreed with emergency contacts in event of evacuation.....	15
Contents of Emergency Store at rear of Christadelphian Hall, Main Road, Slyne.....	15

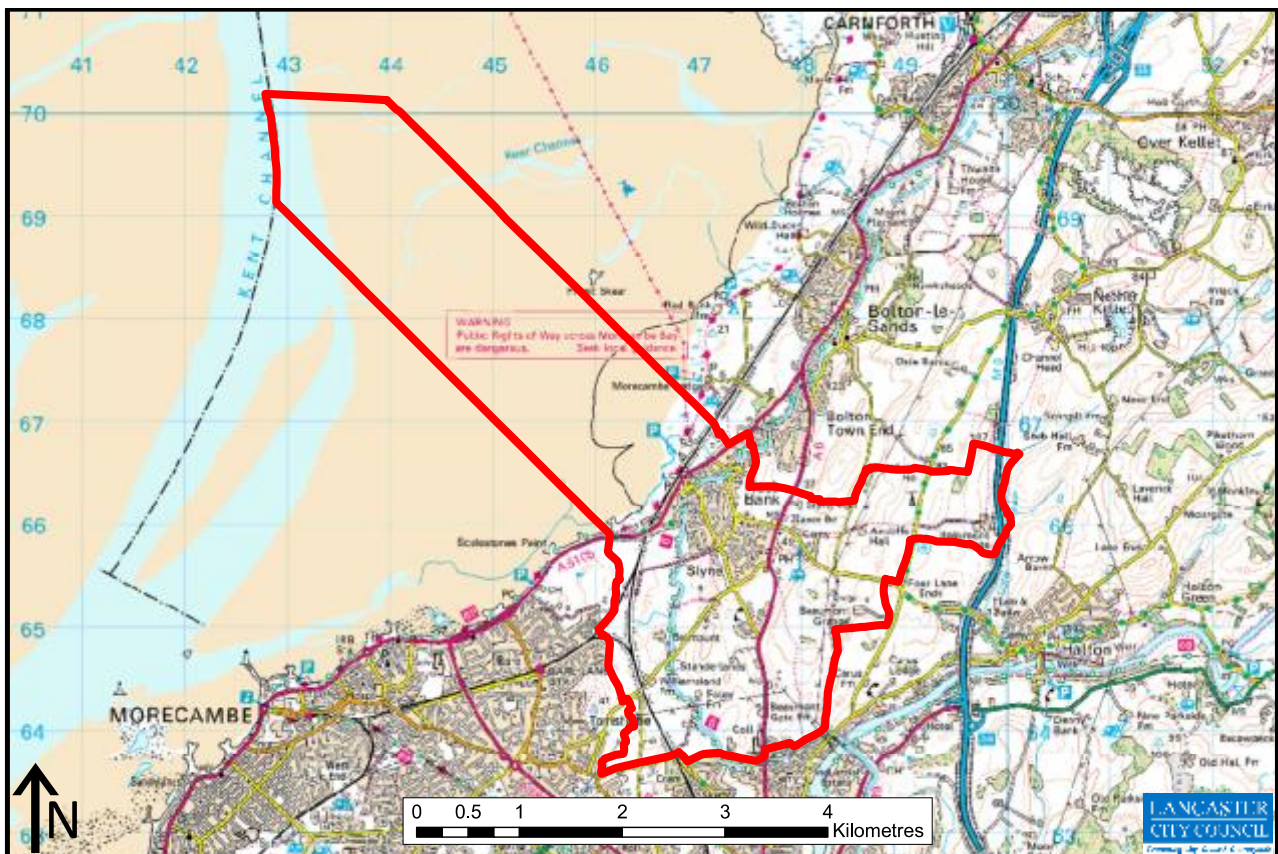
# Community Profile

**Slyne-with-Hest** is a civil parish in the City of Lancaster in Lancashire, England. The parish is north of Lancaster and consists of two merged villages; Slyne and Hest Bank. It has a population of 3,126 as recorded in the 2011 census. The parish has a greater proportion of residents aged 60 years when compared with Lancaster District.

A large section of the western boundary is the coast of Morecambe Bay. The eastern and southern parts are farmland and have recently been bisected by the construction of the Bay Gateway a dual carriageway linking Heysham to the M6. The Parish is traversed by the A6 north from Lancaster, by the west coast mainline railway and by the Preston to Kendal canal. The M6 motorway is in the far east of the parish.

The parish consists of a primary school, a shop and post office, three public houses, various recreational facilities and churches. There are a number of residential homes for the elderly and a further education college for disabled young people at Beaumont.

The area has been subject to incidents of surface water flooding following heavy rainfall, most notably in December 2015 which closed a section of the A6 and flooded at least 20 houses on the A6, at the bottom of Hest Bank Lane and Bottomdale Road. The wider area experienced a prolonged power cut for five days when a sub-station was flooded by the River Lune. The Morecambe Bay cockling disaster occurred in February 2004 when 21 Chinese migrant labourers were drowned by an incoming tide off the coast at Hest Bank. There was a high speed rail derailment in May 1965 at Hest Bank Station, there were no deaths, the station was closed shortly afterwards.



Date: 27/01/2016

© Crown copyright and database rights 2016 Ordnance Survey 100025403.

# Local risk assessment

Risks	Impact on community	What can the Community Emergency Group do to prepare?
Surface water flooding	<ul style="list-style-type: none"> <li>• Flooding of major roads e.g. A6 leading to closure</li> <li>• Flooding of minor roads e.g. Hest Bank Lane and Bottomdale Road</li> <li>• Damage to residential property</li> <li>• Damage to business property</li> </ul>	<ul style="list-style-type: none"> <li>• Encourage residents to improve home flood defences</li> <li>• Contact local fire services to obtain early intervention</li> <li>• Telephone tree to help with distribution of flood warnings and any evacuation</li> <li>• Keep up to date with the flood defences that are planned in the area</li> <li>• Set up rest centre in Village Hall &amp; Church Halls, if required</li> </ul>
Electrical power cut	<ul style="list-style-type: none"> <li>• Potential risk to elderly and vulnerable adults in private homes and residential homes due to lack of cooking and heating facilities</li> </ul>	<ul style="list-style-type: none"> <li>• Establish list of vulnerable elderly to check up on/assist</li> <li>• Telephone tree (fixed landlines required) to coordinate response and liaise with council and relevant organisations</li> <li>• Establish links to local and county radio stations to advertise any provision of help within the village.</li> <li>• Contact residential homes to understand their plans/needs</li> <li>• Open up centers which can use mains or bottled gas to provide hot water, flask filling facilities and hot food/beverages for</li> </ul>

		those without the means to do so
Wind/storm damage	<ul style="list-style-type: none"> <li>• Injury to person and property from debris and fallen trees</li> <li>• Closure of local roads</li> </ul>	<ul style="list-style-type: none"> <li>• Establish rest center if needed</li> <li>• Contact local tree surgeon, if necessary, to assist with clearing debris and/or trees</li> </ul>
Rail derailment	<ul style="list-style-type: none"> <li>• Injury or loss of life</li> <li>• Closure of local roads</li> </ul>	<ul style="list-style-type: none"> <li>• Establish rest center if required by emergency service</li> </ul>
Major accident on Bay Gateway or M6	<ul style="list-style-type: none"> <li>• Injury or loss of life</li> <li>• Closure of local roads</li> </ul>	<ul style="list-style-type: none"> <li>• Establish rest center if required by emergency services</li> </ul>
Flooding from sea due to adverse weather	<ul style="list-style-type: none"> <li>• Flooding risk to homes and businesses adjacent to sea</li> </ul>	<ul style="list-style-type: none"> <li>• Encourage residents to improve home flood defenses</li> <li>• Establish rest center if required by emergency services</li> <li>• Contact VVV to find out their emergency plans</li> </ul>

## Local skills and resources assessment

<b>Skill/Resource</b>	<b>Who?</b>	<b>Contact details</b>	<b>Location</b>	<b>Notes</b>
Chainsaw owner (tree surgeon)	Pete Walton	01524 823513/ 07929 338167	1 Kirkland's, Hest Bank	
Water/food supplies	Londis shop	01524 822 661	13 Manor Road, Slyne	
Rapid Relief Team	Plymouth Brethren	Lloyd Simpson 07848453694	26 Throstle Grove, Hest Bank	
Defibrillator	N/A	Call 999 for access code	Outside Memorial Hall, Hanging Green Lane, Hest Bank	Available 24 hours a day
Defibrillator	N/A	Call 999 for access code	St Luke's Primary School, Shady Lane, Hest Bank	Available in school hours only
Defibrillator	N/A	Call 999 for access code	Outside Spar Shop, 160 Coastal Road, Bolton le Sands	Available 24 hours a day
Electricity Information & Reporting	N/A	Call 105	National Telephone Number, who will put through to local operator	



## Key locations identified with emergency services for use as places of safety

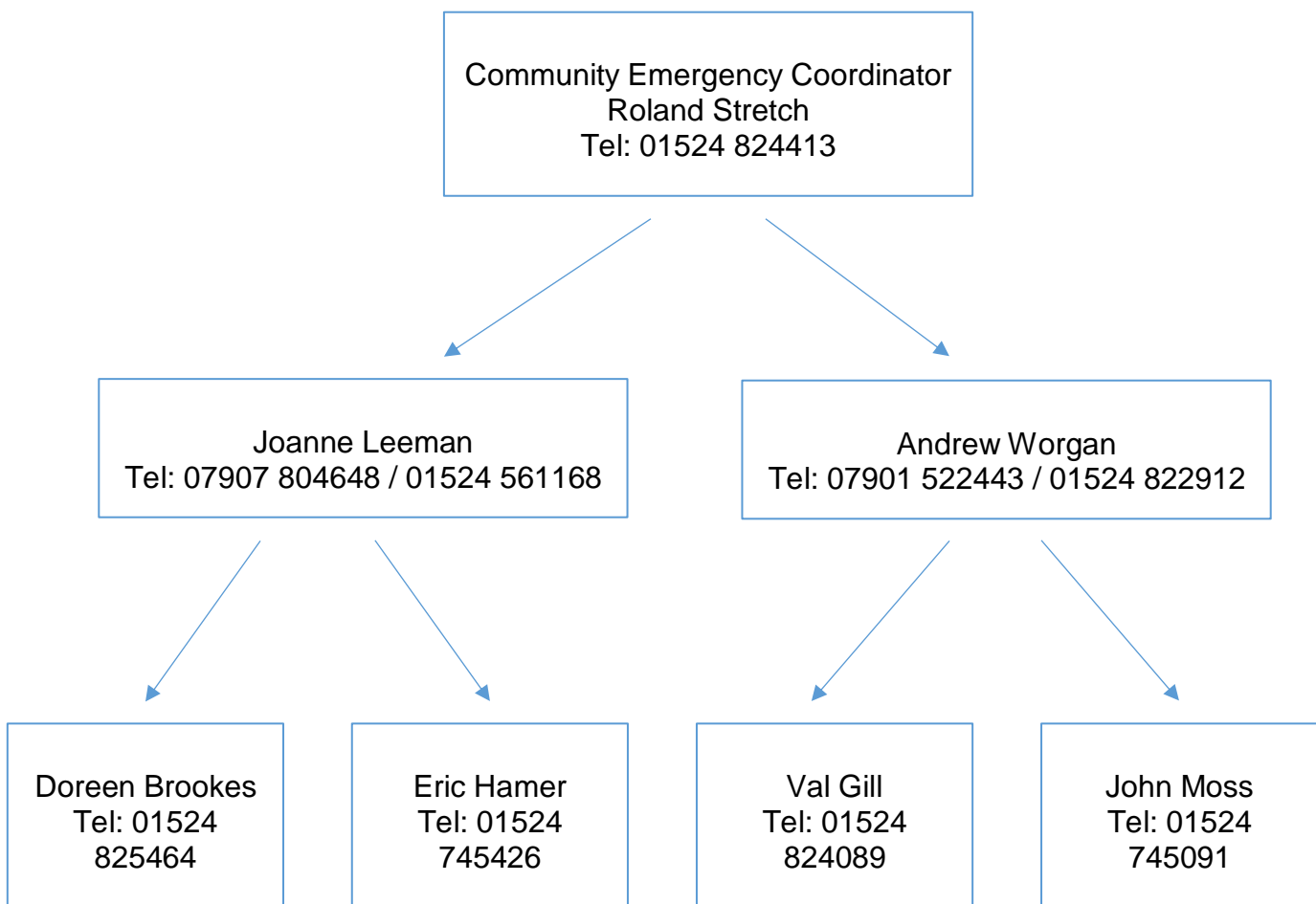
<b>Building</b>	<b>Location</b>	<b>Potential use in an emergency</b>	<b>Contact details of key holder</b>
Slyne with Hest Memorial Hall	Hanging Green Lane, Hest Bank	Rest Centre (no cooking facilities, no landline)	Doreen Brookes Tel: 01524 825464
St Luke's Church Hall	Shady Lane, Slyne	Rest Centre (with cooking facilities, no landline)	Andrew Worgan Tel: 01524 822 912 or 07901 522 443
Christadelphian Hall	Main Road, Slyne	Storage for Emergency Supplies & Rest Centre (has kitchen and landline)	John Moss Tel: 01524 745091 (Keys for Emergency Store also held by Roland Stretch, Doreen Brookes and Joanne Leeman)

# Emergency contact list

	<b>Name:</b> Roland Stretch
	<b>Title:</b> Community Emergency Coordinator
	<b>24hr telephone contact:</b>
	<b>Email:</b>
	<b>Address:</b> 7 Manor Road, Slyne
	<b>Name:</b> Vacant
	<b>Title:</b>
	<b>24hr telephone contact:</b>
	<b>Email:</b>
	<b>Address:</b>

# Telephone tree – Emergency Contacts

The phone tree works as a pyramid, with the coordinator at the top making the first call to two or more people. In turn, they call an assigned set of people and so on, until the tree is complete.



# Organisations that may be able to help identify vulnerable people in an emergency

<b>Organisation</b>	<b>Name and role of contact</b>	<b>Phone number</b>
United Reformed Church	Val Gill	01524 824089
St Luke's C of E Church, Slyne With Hest	Andrew Worgan. Church member, nearest key holder	01524 822912 07901 522443
Slyne with Hest Parish Council	Doreen Brookes, Parish Council Clerk	01524 825464

## Activation triggers

1. When we get a flood warning
2. When Police, Lancashire County Council, Lancaster City Council, Fire Service or Environment Agency email or rings the coordinator
3. If there is a power cut across the village lasting more than 12- 18 hours (dependent on time of day)

# First steps in an emergency

	<b>Instructions</b>	<b>Tick</b>
<b>1</b>	Call 999 (unless already alerted)	
<b>2</b>	Ensure you are in no immediate danger	
<b>3</b>	Contact the Community Emergency Group and meet to discuss the situation	
<b>4</b>	Establish Rest Centre in either Memorial Hall or St Luke's Church Hall if needed by Emergency Services	
<b>5</b>	Access Emergency Supplies located in Emergency Store behind the Christadelphian Hall, if required	
<b>6</b>	Contact local media to advertise services available	
<b>7</b>		
<b>8</b>		
<b>9</b>		
<b>10</b>		

# Community Emergency Group first meeting agenda

Date:

Time:

Location:

Attendees:

## **1. What is the current situation?**

### **Location of the emergency. Is it near:**

- A school?
- A vulnerable area?
- A main access route?
- Type of emergency:
- Is there a threat to life?
- Has electricity, gas or water been affected?

### **Are there any vulnerable people involved?**

- Elderly
- Families with children

### **What resources do we need?**

- Food and drinking water?
- Off-road vehicles?
- Blankets?
- Shelter?
- Sand bags?
- Candles, torches etc?

## **2. Establishing contact with the emergency services**

## **3. How can we support the emergency services?**

## **4. What actions can safely be taken?**

## **5. Who is going to take the lead for the agreed actions?**

## **6. Any other issues?**

# Actions agreed with emergency responders in the event of an evacuation

1. Help police/local authority with door knocking
2. Tell emergency services who might need extra help to leave their home
3. Establish rest center if needed and access emergency supplies from store room at rear of Christadelphian Hall, Main Road, Slyne. Key Holders; Joanne Leeman, Doreen Brookes and Roland Stretch.

# Contents of emergency store located behind Christadelphian Hall, Main Road, Slyne

- 1,000 Hessian Sand Bags
- 4 Wind-up/Battery Radio with Torch
- 80 Batteries
- 10 Torches
- 1 First Aid Kit
- 100 Water Purifying Tablets
- 25 Foil Survival Blankets
- 1 x 20 ltr. Gas Water Urn
- 1 x 13 kg Gas Bottle & Regulator Kit
- 20 High Vis Jackets
- Bin Bags
- 1 x Loud Hailer
- Plastic Name Badges for Volunteers